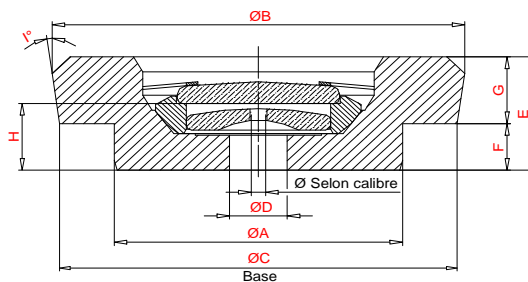


N°ARTICLE	N°CODE	ØA	ØB	ØC	ØD	E	F	G	H	I°	FAMILLE
9111-5884	1E-4864	2.50	4.80	4.54	0.45	1.85	0.75	1.10	1.00	-	Trior
9111-6093	1-4863	2.50	4.80	4.54	0.45	1.85	0.75	1.10	1.00	-	Trior
9121-7185	2-4561	2.10	2.66	2.58	0.35	0.84	0.50	0.34	0.50	10	Flector
9131-5824	3-7059	1.60	1.89	1.80	0.28	0.42	0.25	0.17	0.25	20	Elastor
9131-5841	3-7154	1.60	1.83	1.75	0.28	0.68	0.28	0.40	0.28	8	Elastor
9131-5846	3-3213	1.90	2.64	2.50	0.38	0.80	0.40	0.40	0.40	12	Elastor
9131-5855	3-3212	1.90	2.34	2.20	0.38	0.85	0.40	0.45	0.45	12	Elastor
9131-5864	3-7110	1.60	2.13	2.00	0.28	0.63	0.28	0.35	0.28	12	Elastor
9131-5904	3-7155	1.60	2.31	2.26	0.32	0.50	0.28	0.25	0.28	8	Elastor
9131-5908	3-7153	1.60	2.43	2.39	0.32	0.53	0.28	0.25	0.28	8	Elastor
9131-5913	3-8050	2.50	3.80	3.70	0.28	0.44	0.26	0.18	0.26	20	Elastor
9131-5918	3-7058	1.60	2.09	2.00	0.28	0.42	0.25	0.17	0.25	20	Elastor
9131-5931	3-7054	1.60	2.09	2.00	0.28	0.44	0.27	0.17	0.27	20	Elastor
9131-5942	3-1050	1.15	1.46	1.14	0.35	0.31	0.18	0.13	0.18	12	Elastor
9131-5945	3-7161	1.60	1.95	1.80	0.28	0.52	0.28	0.24	0.29	20	Elastor
9131-5949	3-3571	1.60	2.11	2.00	0.32	0.76	0.40	0.36	0.40	12	Elastor
9131-5956	3-8751	1.90	2.56	2.48	0.32	0.75	0.35	0.40	0.45	8	Elastor
9131-5974	3-7061	1.60	1.83	1.75	0.28	0.80	0.40	0.40	0.40	8	Elastor
9131-5995	3-7054	1.60	2.09	2.00	0.28	0.44	0.27	0.17	0.27	20	Elastor
9131-5995	3-7311	1.60	2.19	2.10	0.32	0.60	0.35	0.25	0.35	12	Elastor
9131-6036	3-1051	1.30	1.60	1.50	0.26	0.43	0.26	0.17	0.26	20	Elastor
9131-6039	3-3253	1.90	2.24	2.10	0.35	0.80	0.40	0.40	0.40	12	Elastor
9131-6059	1-4865	2.30	4.05	3.91	0.45	1.20	0.60	0.60	0.60	8	Trior
9131-6073	3-3530	1.90	2.63	2.50	0.32	0.76	0.40	0.36	0.50	12	Elastor
9131-6103	3-4566	2.10	2.56	2.48	0.38	0.90	0.50	0.40	0.50	8	Elastor
9131-6138	3-2260	1.60	2.1	2.00	0.32	0.75	0.40	0.35	0.40	12	Elastor
9131-6152	6-6077	2.30	2.98	2.81	0.46	1.39	0.69	0.70	0.69	8	Elastor
9131-6153	3-1052	1.30	1.47	1.41	0.27	0.44	0.24	0.20	0.24	12	Elastor
9131-6157	3-7159	1.60	2.31	2.26	0.28	0.50	0.28	0.22	0.28	8	Elastor
9131-6174	3-8151	1.90	2.19	2.10	0.28	0.50	0.25	0.25	0.28	12	Elastor
9131-6217	6-6061	2.30	4.46	3.80	0.38	1.70	0.70	1.00	0.70	20	Elastor
9131-6243	3-7152	1.60	1.89	1.80	0.28	0.45	0.28	0.17	0.28	20	Elastor
9131-6258	3-3214	1.90	2.34	2.20	0.38	0.90	0.40	0.50	0.40	12	Elastor
9131-6276	3-8152	1.70	2.06	2.00	0.28	0.47	0.28	0.19	0.28	12	Elastor
9131-6330	3-7062	1.70	2.15	2.00	0.35	0.66	0.27	0.39	0.37	12	Elastor
9131-6351	3-4453	2.10	2.43	2.35	0.32	0.75	0.35	0.40	0.45	8	Elastor
9131-6407	3-2254	1.60	1.93	1.82	0.32	0.70	0.40	0.30	0.40	15	Elastor
9131-6432	3-3431	1.90	2.63	2.50	0.32	0.71	0.35	0.36	0.45	12	Elastor
9131-6603	3-7160	1.60	2.29	2.21	0.28	0.68	0.28	0.40	0.28	8	Elastor
9131-6894	3-7010	1.60	2.13	2.00	0.28	0.75	0.40	0.35	0.40	12	Elastor
9131-6920	5/93-3430	1.90	2.91	2.80	0.32	0.65	0.35	0.30	0.45	12	Elastor
9131-6969	3-7163	1.60	2.29	2.25	0.28	0.45	0.28	0.17	0.28	8	Elastor
9131-6997	3-4255	2.10	3.15	3.02	0.35	0.75	0.40	0.35	0.40	15	Elastor
9131-7158	3-2262	1.60	2.29	2.21	0.32	0.81	0.40	0.41	0.40	8	Elastor
9131-7166	3-2263	1.60	2.35	2.26	0.32	0.53	0.31	0.22	0.31	8	Elastor
9131-7377	3-7162	1.60	2.29	2.21	0.32	0.68	0.28	0.40	0.40	8	Elastor
9131-7394	3-3215	1.90	2.56	2.48	0.38	0.80	0.40	0.40	0.40	8	Elastor
9131-7462	3-3259	1.90	2.70	2.62	0.32	0.93	0.53	0.40	0.53	8	Elastor
9131-7468	3-2531	1.60	2.30	2.20	0.32	0.60	0.30	0.30	0.40	12	Elastor
9131-7512	3-3558	1.60	2.63	2.50	0.32	0.85	0.50	0.35	0.50	12	Elastor
9131-7573	4-4567	2.10	4.03	3.78	0.38	0.95	0.50	0.45	0.50	20	Elastor
9131-7575	3-4213	2.10	2.64	2.50	0.35	0.80	0.40	0.40	0.40	12	Elastor
9131-7637	3-3430	1.90	3.13	3.00	0.32	0.71	0.35	0.36	0.45	12	Elastor
9131-7702	3-2264	1.60	2.13	2.03	0.32	0.82	0.47	0.35	0.50	12	Elastor
9131-7708	3-7164	1.60	1.83	1.75	0.32	0.66	0.28	0.38	0.36	8	Elastor
9131-7736	3-2532	1.60	2.30	2.20	0.28	0.60	0.30	0.30	0.40	12	Elastor
9131-7764	3-2533	1.60	3.11	2.88	0.32	0.85	0.48	0.37	0.48	20	Elastor
9131-7780	3-2534	1.60	2.34	2.20	0.35	0.75	0.38	0.37	0.48	12	Elastor
9131-7817	3-7165	1.60	2.31	2.26	0.32	0.70	0.48	0.22	0.48	8	Elastor
9131-8009	3-2535	1.60	1.83	1.75	0.32	0.80	0.40	0.40	0.40	8	Elastor
9131-8078	3-2536	1.60	2.43	2.37	0.32	0.65	0.35	0.30	0.45	8	Elastor
9131-8088	3-4254	2.10	2.54	2.40	0.35	0.80	0.40	0.40	0.40	12	Elastor
9131-8100	3-2265	1.60	1.90	1.81	0.32	0.65	0.35	0.30	0.35	10	Elastor



N°ARTICLE	N°CODE	ØA	ØB	ØC	ØD	E	F	G	H	I°	FAMILLE
9131-8104	3-3574	1.60	2.63	2.50	0.32	0.70	0.35	0.35	0.40	12	Elastor
9131-8225	3-3451	1.90	2.44	2.30	0.38	0.80	0.40	0.40	0.40	12	Elastor
9131-8287	3-7166	1.60	2.35	2.00	0.32	0.55	0.28	0.27	0.28	-	Elastor
9131-8371	3-2537	1.80	3.16	2.86	0.39	0.93	0.48	0.45	0.48	20	Elastor
9131-8385	3-2538	1.60	2.11	2.00	0.30	0.60	0.30	0.30	0.41	12	Elastor
9131-8429	3-2266	1.60	2.30	2.21	0.32	0.77	0.35	0.42	0.43	8	Elastor
9131-8442	3-3452	1.90	2.31	2.21	0.32	0.82	0.40	0.42	0.50	8	Elastor
9131-8706	3-3454	1.90	2.45	2.30	0.32	0.80	0.37	0.43	0.50	12	Elastor
9131-8844	3-8153	1.90	2.59	2.48	0.32	0.60	0.30	0.30	0.29	12	Elastor
9131-9038	3-3455	1.90	2.31	2.21	0.32	0.82	0.40	0.42	0.40	8	Elastor
9132-0240	3-3533	1.90	2.62	2.50	0.34	0.74	0.38	0.36	0.48	12	Elastor
9132-0547	3-7167	1.60	1.92	1.80	0.28	0.62	0.30	0.32	0.33	12	Elastor
9132-0613	3-72	1.60	2.30	2.20	0.32	0.59	0.33	0.26	0.34	12	Elastor
9132-0670	3-3458	1.90	2.40	2.20	0.32	0.82	0.40	0.10	0.50	0	Elastor
9132-0720	3-7166	1.60	2.63	2.50	0.33	0.63	0.28	0.35	0.28	12	Elastor
9132-0767	3-3534	1.90	2.63	2.50	0.32	0.66	0.30	0.10	0.40	12	Elastor
9141-6000	4-4050	2.10	2.29	2.21	0.32	0.63	0.23	0.40	0.36	8	Satellor
9151-5924	6-6079	2.50	5.30	4.66	0.60	1.60	0.60	1.00	0.60	20	KIF 5
9152-0804	5-32	1.90	2.63	2.5	0.32	0.66	0.30	0.36	0.40	12	
9161-5854	6-2675	1.90	2.62	2.50	0.32	0.77	0.40	0.37	0.50	12	Ultraflex
9161-5856	6-2501	1.90	2.20	x	0.32	0.77	0.37	0.40	0.50	0	Ultraflex sous
9161-5857	6-25	1.60	2.20	x	0.32	0.77	0.37	0.40	0.50	0	Ultraflex sous
9161-5858	6-2534	1.60	2.12	2.00	0.32	0.77	0.40	0.37	x	12	Ultraflex
9161-6027	6-6081	2.20	5.40	4.75	0.45	1.60	0.60	1.00	0.60	20	Ultraflex
9161-6230	6-2660	1.90	3.12	3.00	0.38	0.76	0.40	0.36	0.50	12	Ultraflex
9161-6396	6-2668	2.10	3.13	3.00	0.38	0.85	0.50	0.35	0.50	12	Ultraflex
9161-7479	6-6064	2.50	4.15	4.00	0.45	1.05	0.60	0.45	0.60	12	Ultraflex
9161-7882	6-2532	1.60	2.33	2.20	0.32	0.76	0.40	0.36	0.50	12	Ultraflex
9161-8194	6-6082	2.50	4.09	4.00	0.45	1.05	0.60	0.45	0.60	12	Ultraflex
9161-9173	6-1401	1.30	1.80	x	0.32	0.67	0.32	0.35	0.45	0°	Ultraflex
9161-9284	6-1402	1.30	1.80	x	0.38	0.65	0.32	0.33	0.45	0°	Ultraflex